

Product Selection Guide:

* Intelligent SNMP Solutions * Support Click&Go™ programming capability

> Cellular EMS Devices

Model	ioLogik W5312	ioLogik W5340	ioLogik W5340-HSDPA
Comm. Interface	GPRS, 10/100M Ethernet	GPRS, 10/100M Ethernet	HSDPA, 10/100M Ethernet
I/O Combination	8 Dis, 4 DIos, 8 DOs	4 Als, 8 DIos, 2 Relays	4 Als, 8 DIos, 2 Relays
Control Protocol	Modbus/TCP, TCP/IP, SNMP (v1, v2c)		
Local Intelligence	Click&Go™		
Alarm Function	SMS, E-mail, SNMP Traps, TCP/UDP Messaging		
Operating Temperature	-10 to 55 °C -30 to 70 °C for T model	-10 to 55 °C -30 to 70 °C for T model	-10 to 55 °C -20 to 70 °C for T model



> Compact EMS Devices

Model	ioLogik E2210	ioLogik E2212	ioLogik E2214	ioLogik E2240	ioLogik E2242	ioLogik E2260
Comm. Interface	10/100M Ethernet					
I/O Combination	12 Dis, 8 DOs	8 Dis, 8 DOs, 4 DIos	6 Dis, 6 Relays	8 Als, 2 AOs	4 Als, 12 DIos	4 DOs, 6 RTDs
Control Protocol	Modbus/TCP, TCP/IP, SNMP (v1, v2c, v3), HTTP, CGI					
Local Intelligence	Click&Go™					
Alarm Function	E-mail, SNMP Traps, TCP/UDP Messaging					
Operating Temperature	-10 to 60°C	-10 to 60°C	-10 to 60°C	-10 to 60°C	-10 to 60°C, -40 to 75°C for T model	-10 to 60°C

> Compact EMS Devices

Model	ioLogik E2262
Comm. Interface	10/100M Ethernet
I/O Combination	4 DOs, 8 TCs
Control Protocol	Modbus/TCP, TCP/IP, SNMP (v1, v2c, v3), HTTP, CGI
Local Intelligence	Click&Go™
Alarm Function	E-mail, SNMP Traps, TCP/UDP Messaging
Operating Temperature	-10 to 60°C



> Modular EMS Devices

Model	ioLogik E4200
Comm. Interface	Dual 10/100M Ethernet
Max. Expansion Capacity	16 slices
Control Protocol	Modbus/TCP, TCP/IP, SNMP (v1, v2c)
Local Intelligence	Click&Go™
Alarm Function	E-mail, SNMP Traps, TCP/UDP Messaging
Operating Temperature	-10 to 60°C

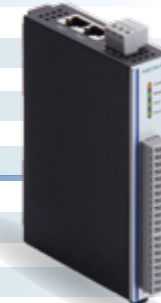


Cost-Effective SNMP Solution

* The ioLogik E1200 firmware that supports the SNMP protocol will be released soon.

> Compact EMS Devices

Model	ioLogik E1210	ioLogik E1211	ioLogik E1212	ioLogik E1214	ioLogik E1240
Comm. Interface	10/100M Ethernet				
I/O Combination	16 Dis	16 DOs	8 Dis, 8 DIos	6 Dis, 6 Relays	8 Als
Control Protocol	Modbus/TCP, TCP/IP, *SNMP (v1, v2c), HTTP				
Alarm Function	*SNMP Traps				
Operating Temperature	-10 to 60°C, -40 to 75°C for T model				



Model	ioLogik E1241	ioLogik E1242	ioLogik E1260	ioLogik E1262
Comm. Interface	10/100M Ethernet			
I/O Combination	4 AOs	4 Als, 4 Dis, 4 DIos	6 RTDs	8 TCs
Control Protocol	Modbus/TCP, TCP/IP, *SNMP (v1, v2c), HTTP			
Alarm Function	*SNMP Traps			
Operating Temperature	-10 to 60°C, -40 to 75°C for T model			

Moxa Headquarters

4F., No.135, Lane 235,
Pao-Chiao Rd., Shing-Tien Dist.,
New Taipei City, Taiwan
Tel: +886-2-8919-1230
Fax: +886-2-8919-1231
www.moxa.com
info@moxa.com

Moxa Americas USA

Toll Free: 1-888-MOXA-USA
(1-888-669-2872)
Tel: +1-714-528-6777
Fax: +1-714-528-6778
usa@moxa.com

Moxa Europe Germany

Tel: +49 89 3 70 03 99-0
Fax: +49 89 3 70 03 99-99
europe@moxa.com

France

Tel: +33 130 85 41 80
Fax: +33 130 47 35 91
france@moxa.com

Moxa Asia-Pacific Taiwan

Tel: +886-2-8919-1230
Fax: +886-2-8919-1231
asia@moxa.com

Moxa India

Bangalore
Tel: +91-80-4172-9088
Fax: +91-80-4132-1045
india@moxa.com

Moxa China Shanghai

Tel: +86-21-5258-9955
Fax: +86-21-5258-5505
china@moxa.com

Beijing

Tel: +86-10-6782-3959/60/61
Fax: +86-10-6872-3958
china@moxa.com

Shenzhen

Tel: +86-755-8368-4084/94
Fax: +86-755-8368-4148
china@moxa.com

MOXA®

Reliable Networks, Sincere Service

©2012 Moxa Inc. All rights reserved.

The MOXA logo is a registered trademark of Moxa Inc. All other logos appearing in this document are the intellectual property of the respective company, product, or organization associated with the logo.

Easily Build Environmental Monitoring Systems with **SNMP I/O**



MOXA®

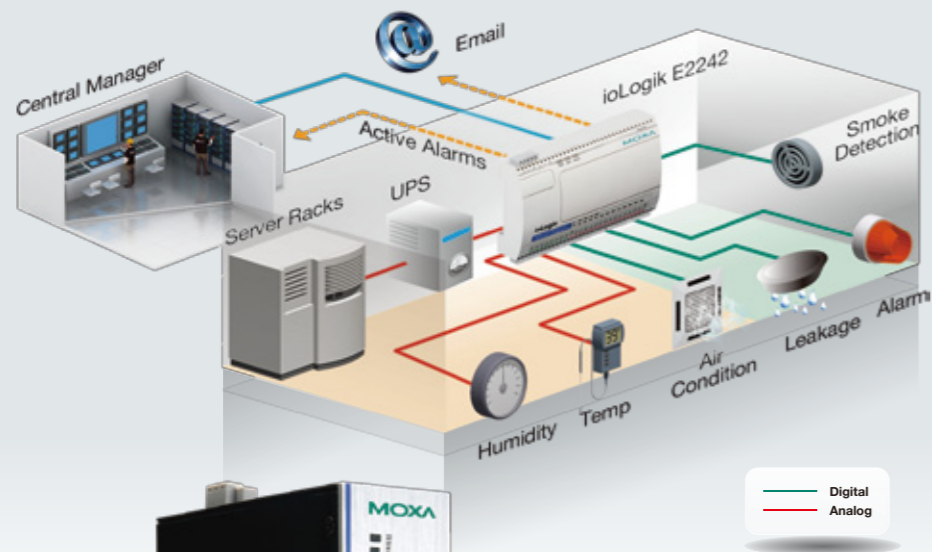
Reliable Networks, Sincere Service

www.moxa.com

Ideal Solutions for Varied Environmental Monitoring Systems (EMS)

Moxa's ioLogik EMS products are designed to monitor environmental conditions in small scale data centers and unmanned facilities. ioLogik features different analog and digital modules to choose from, and can actively send out alarms in various formats, such as email, SMS, CGI Command, and SNMP trap.

» Data Center EMS

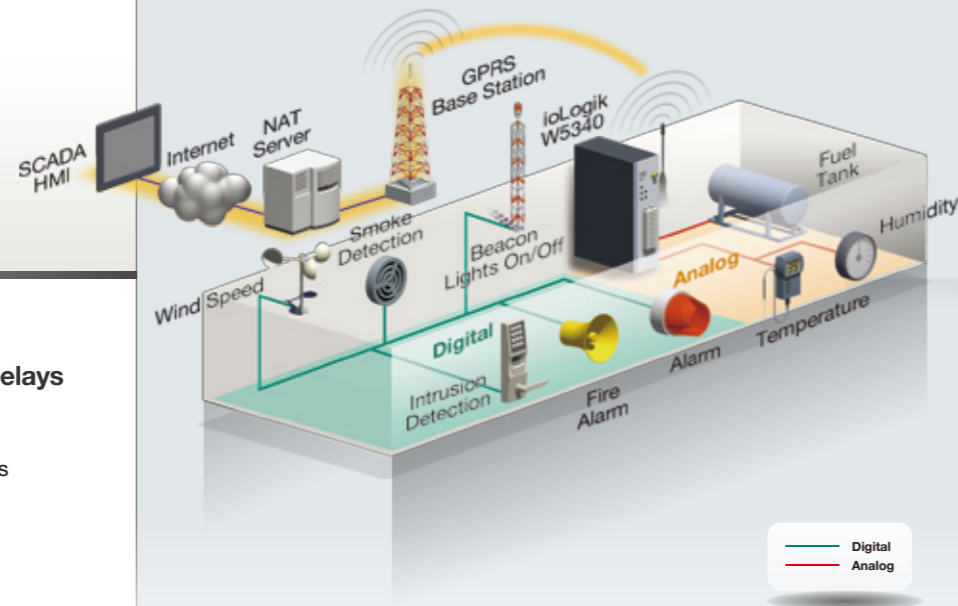


ioLogik E2242 Ethernet EMS Device with 4 AIs, 12 DIOs

- 4 AIs and 12 configurable DIOs, optimal for most EMS applications
- Supports event trigger active alarms
- Supports versatile alarm methods including email, SNMP trap, CGI command
- Supports user definable SNMP trap content
- Supports intelligent Click&Go™ logic for local control



» Remote Unmanned Facility EMS



ioLogik W5340 GPRS EMS Device with 4 AIs, 8 DIOs, 2 Relays

- Embedded quad-band GPRS for remote EMS
- Supports remote configuration over the air
- Supports event trigger active alarms, ideal for wireless communications
- Supports versatile alarm methods including email, SMS, and SNMP.
- Supports user definable SNMP trap content
- Supports intelligent Click&Go™ logic for local control

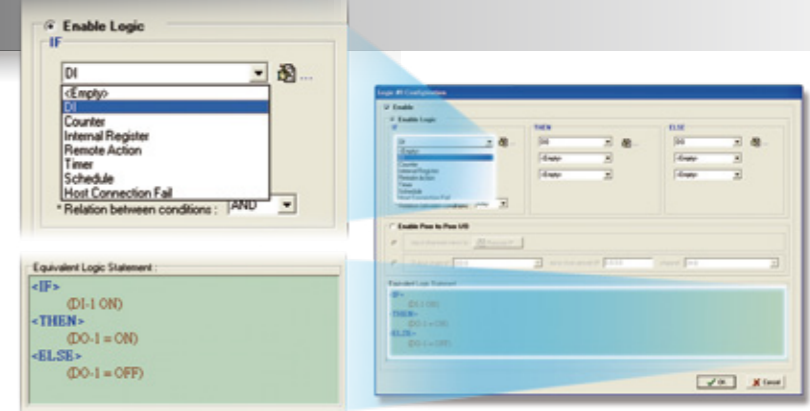


The Powerful, Easy Way to Create an EMS

» Set Up Local and Remote EMS Alarms with Just a Few Clicks

Programming-free Click&Go™ I/O Control Logic!

ioLogik EMS devices use intuitive IF-THEN-ELSE logic for local control and remote alarm configuration. For example, to configure a fire alarm, just select "IF" DI fire alarm is ON "THEN" DO buzzer ON "ELSE" DO buzzer OFF. Click, click, click, and done.



» A New Way to Manage EMS with SNMP

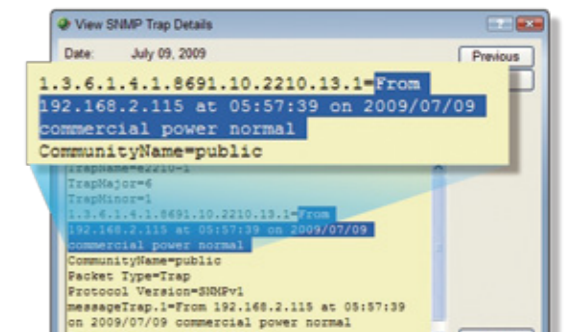
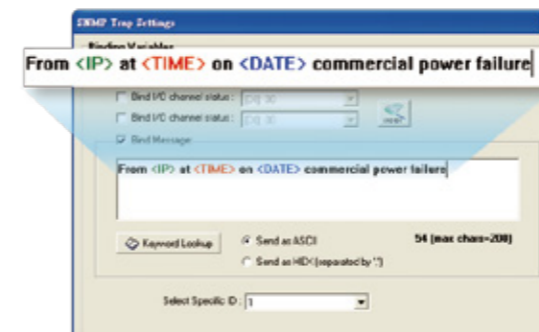
The Most Comprehensive SNMP EMS Solution

ioLogik EMS devices offer complete SNMP v1/v2c/v3 support, giving you the greatest flexibility when using SNMP to manage the EMS. In addition, ioLogik also supports SNMP to I/O functions, so you can easily read the sensor status and set the DO alarms with SNMP.

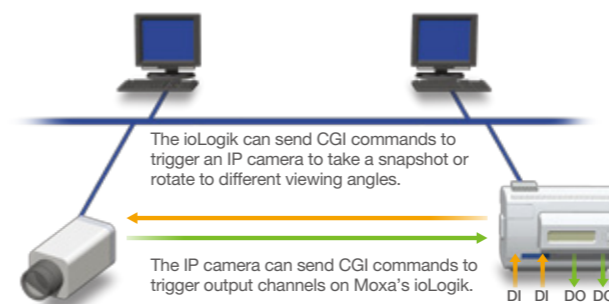
User-Definable SNMP Trap Content

ioLogik EMS devices provide extraordinary flexibility in SNMP alarms. ioLogik devices allow you to edit the trap content to include information such as time stamps, contact status, scaled AI reading, and server location.

With user-definable trap content, you do not need to waste time setting up the SNMP manager for trap interpretation. What you see is what you get.



» Complete Local Intelligence for Local Alarm Control and Interaction with CCTV Systems



With Click&Go™ logic, an ioLogik device can easily establish a local alarm system that can interact with an IP camera via its Ethernet port. The secret lies in ioLogik's support for CGI commands. ioLogik can send out active CGI commands upon the triggering of alarms. For example, if a fire breaks out at the remote location, ioLogik devices can send out a CGI command to a PTZ camera to turn it to a preset position. This makes it easier for you to check the status of your remote location without the added requirement of manual control from the central site.